

COPPER LAKE

A REPLAT OF TRACTS B & P OF "THE NEWPORT BAY CLUB, A P.U.D.", (P.B.56, PG.10-12)
SITUATE IN SECTION 34, TOWNSHIP 46 SOUTH, RANGE 42 EAST
PALM BEACH COUNTY, FLORIDA

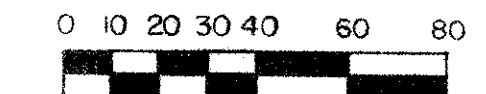
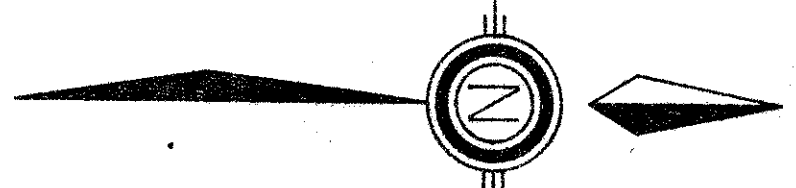
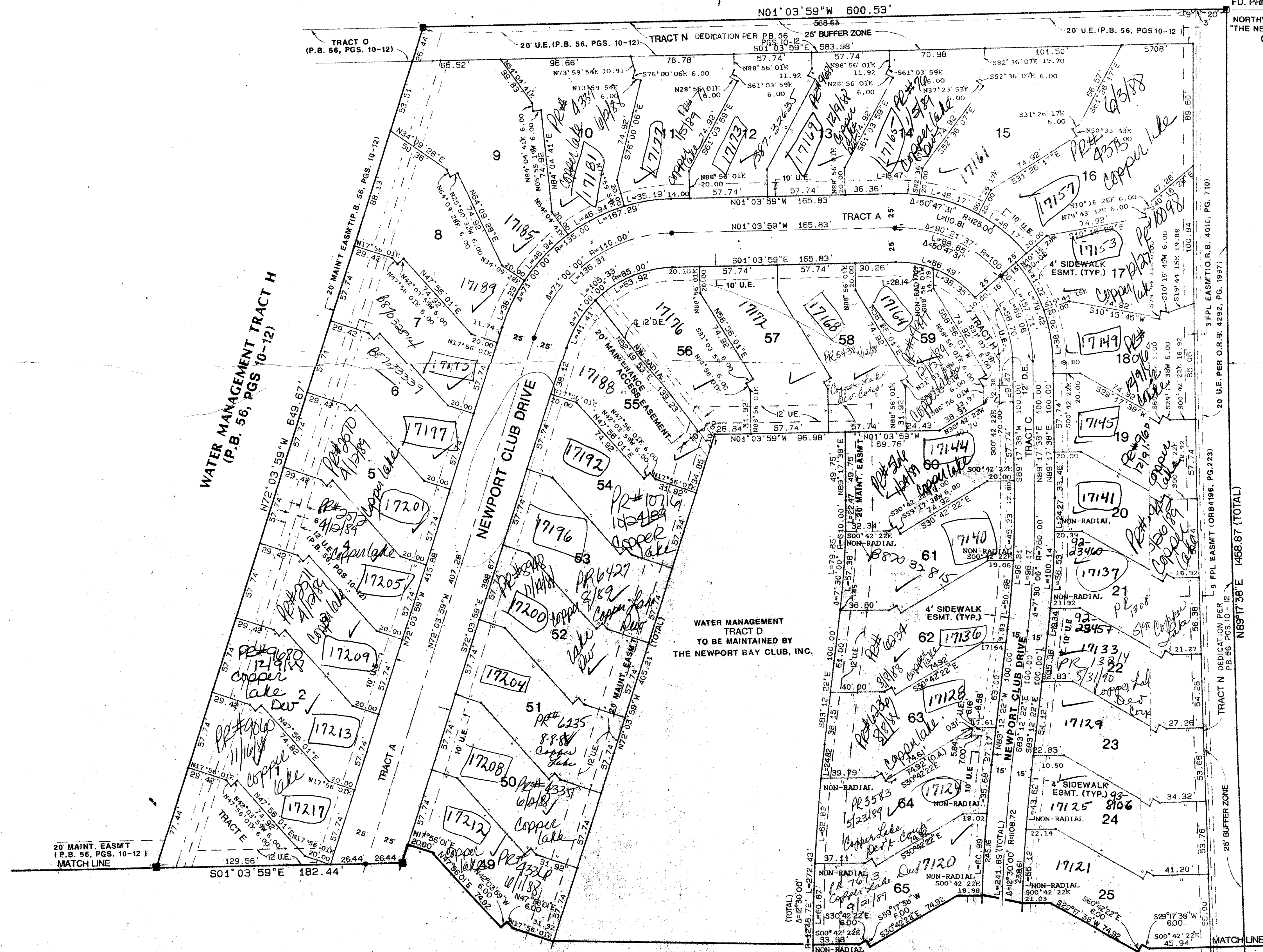
JULY, 1987

SHEET 2 OF 4

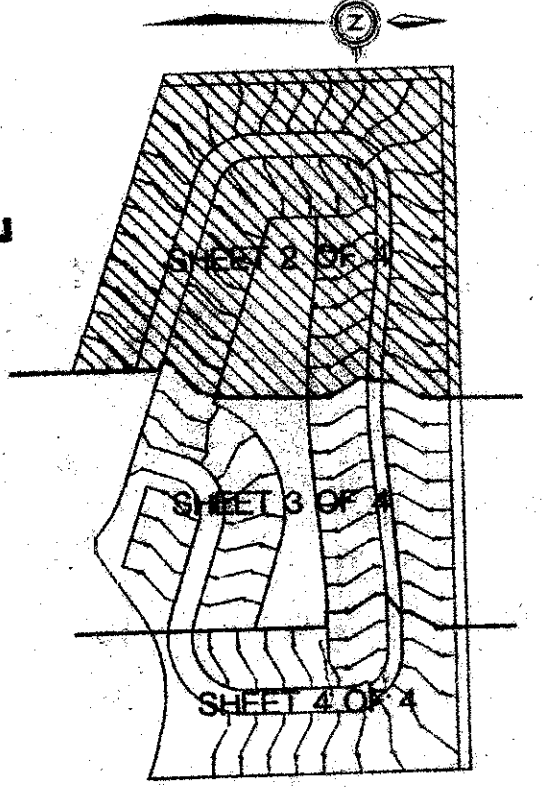
UNPLATTED

STATE OF FLORIDA
COUNTY OF PALM BEACH
THIS PLAT WAS FILED FOR
RECORD
THIS DAY OF
AUGUST, 1987 AND DULY RECORDED
IN PLAT BOOK ON PAGES
AND
JOHN B. DUNKLE, CLERK
BY: _____, D.C.

FD. PRM #2977
NORTHWEST CORNER TRACT P,
"THE NEWPORT BAY CLUB, A P.U.D."
(P.B. 56, PGS. 10-12)



210' LWDD CANAL L-38 (O.R.B. 4022, PG. 231)



SHEET LOCATION MAP (N.T.S.)

ADD. BY (P)
0505/001
59/28

Meridian		2000 LOMBARD STREET WEST PALM BEACH, FL	
Surveying and mapping inc.			
DRAWN	D. M. W.	DATE	AUG. 1987
CHECKED	W. B. H.	SCALE	1" = 100'
DRAWING NO.	092201	COPPER LAKE (PARCEL B) THE NEWPORT BAY CLUB, A P.U.D.	

SEE SHEET 3 OF 4

SUBDIVISION: Copper Lake
BOOK: 56
PAGE: 10-12
PLAT # 85-167
PUB. DATE: 7/1/87

Map # 9
FSZ R/L3
85-167 tract A

TAZ 603
9/5/1987